



Honesty • Efficiency • Supremacy

Pot Magnet (NdFeB)

External Thread



Countersunk hole



Internal thread



Straight hole



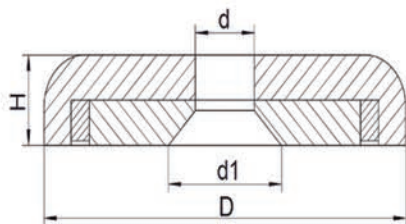
Screwed bush



厦门顶磁磁业有限公司
XIAMEN KINGS MAGNET CO.,LTD

NdFeB Pot Magnet

1.Countersunk NdFeB Pot Magnet



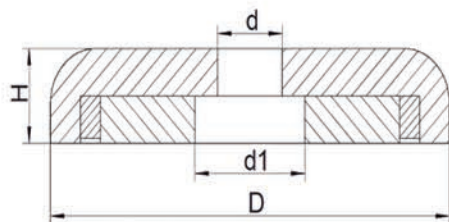
Model	D(mm)	d(mm)	d1(mm)	H(mm)	Weight(g)	Pull Force(KG)
KM-SNA12	12	3.5	6.5	4.5	4	2.5
KM-SNA16	16	3.5	6.5	5	7	6
KM-SNA20	20	4.5	8.6	7	14	11
KM-SNA25	25	5.5	10.6	8	25	22
KM-SNA32	32	5.5	10.6	8	42	32
KM-SNA36	36	6.5	11.3	8	54	43
KM-SNA42	42	6.5	11.3	8.6	78	65
KM-SNA48	48	8.5	19	10.8	120	75
KM-LNA48	48	8.5	15.5	11	138	75
KM-LNA55	55	8.5	14.5	12	205	95
KM-LNA60	60	8.5	14.5	15	305	160
KM-LNA70	70	10.5	16.5	17	485	210
KM-LNA75	75	10.5	16.5	18	560	250
KM-LNA80	80	10.5	16.5	18	668	300
KM-LNA90	90	10.5	16.5	18	850	380
KM-LNA120	120	12.5	22.5	18	1520	480



The will of life and work will create a miracle.(Nekrasov)

NdFeB Pot Magnet

2.Straight Hole NdFeB Pot Magnet



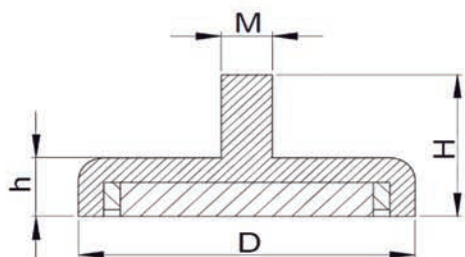
Model	D(mm)	d(mm)	d1(mm)	H(mm)	Weight(g)	Pull Force(KG)
KM-SNB12	12	3.5	6.5	4.5	4	2
KM-SNB16	16	3.5	6.5	5	7	5
KM-SNB20	20	4.5	8	7	13	10
KM-SNB25	25	5.5	9	8	19	20
KM-SNB32	32	5.5	9	8	38	30
KM-SNB36	36	6.5	11	8	48	40
KM-SNB42	42	6.5	11	8.6	70	60
KM-LNB48	48	8.5	15	11	115	70
KM-LNB55	55	8.5	15	12	190	90
KM-LNB60	60	8.5	15	15	240	150
KM-LNB70	70	10.5	18	17	430	180
KM-LNB75	75	10.5	18	18	515	220
KM-LNB80	80	10.5	18	18	641	240
KM-LNB90	90	10.5	18	18	800	310
KM-LNB120	120	12.5	25	18	1380	420



You have to believe in yourself. That's the secret of success.(Charles Chaplin)

NdFeB Pot Magnet

3.External Thread NdFeB Pot Magnet



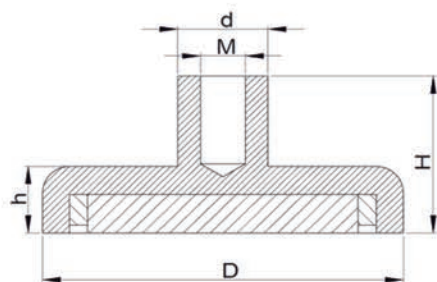
Model	D(mm)	M	H(mm)	h(mm)	Weight(g)	Pull Force(KG)
KM-SNC10	10	M3	14	5	4	2
KM-SNC12	12	M3	14	5	5	4
KM-SNC16	16	M4	13.2	5	8	8
KM-SNC20	20	M4	16	7	17	12
KM-SNC25	25	M5	17	8	30	25
KM-SNC32	32	M6	18	8	50	34
KM-SNC36	36	M6	18	8	62	50
KM-SNC42	42	M6	18	11	89	72
KM-LNC48	48	M8	24	11	152	81
KM-LNC55	55	M8	28	12	220	95
KM-LNC60	60	M8	28	15	325	160
KM-LNC70	70	M10	34	17	510	200
KM-LNC75	75	M10	35	18	620	250
KM-LNC80	80	M10	35	18	700	300
KM-LNC90	90	M10	35	18	885	360
KM-LNC120	120	M12	40	18	1570	480



Sincerity is the highest virtue in life.(Chaucer)

NdFeB Pot Magnet

4.Screwed Bush NdFeB Pot Magnet



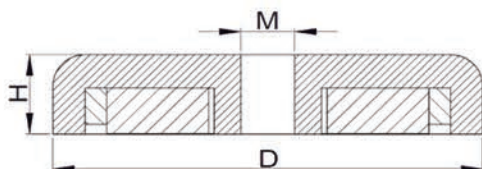
Model	D(mm)	D1(mm)	M	H(mm)	h(mm)	Weight(g)	Pull Force(KG)
KM-SND10	10	6	M3	12.5	5	4	2
KM-SND12	12	6	M3	12.5	5	5	4
KM-SND16	16	6.5	M4	12.6	5	9	8
KM-SND20	20	6.5	M4	14	7	17	12
KM-SND25	25	7.5	M5	17	8	31	25
KM-SND32	32	10	M6	18	8	52	34
KM-SND36	36	10	M6	18	8	60	50
KM-SND42	42	10	M6	18	8.6	95	72
KM-LND48	48	12	M8	24	11	160	81
KM-LND55	55	12	M8	28	12	230	95
KM-LND60	60	12	M8	28	15	340	160
KM-LND70	70	17	M10	34	17	520	200
KM-LND75	75	17	M10	35	18	635	250
KM-LND80	80	17	M10	35	18	715	300
KM-LND90	90	17	M10	35	18	910	360
KM-LND120	120	22	M12	40	18	1660	480



Only those who have the patience to do simple things perfectly
 ever acquire the skill to do difficult things easily.(Friedrich Schiller)

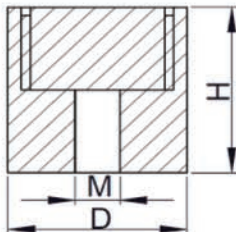
NdFeB Pot Magnet

5.Internal Thread NdFeB Pot Magnet



Model	D(mm)	H(mm)	M	Weight(g)	Pull Force(KG)
KM-SNH16	16	5	M3	7	4
KM-SNH20	20	7	M4	14	8
KM-SNH25	25	7.7	M5	25	17
KM-SNH32	32	7.7	M5	44	27
KM-SNH36	36	7.5	M6	55	36
KM-SNH42	42	8.6	M6	86	50
KM-SNH48	48	10.6	M8	132	70
KM-LNH60	60	12	M8	229	140
KM-LNH75	75	15	M10	464	220

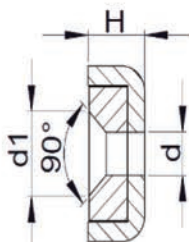
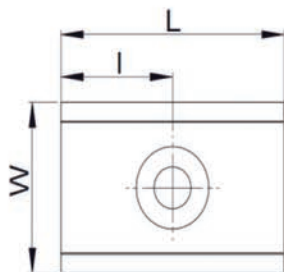
6.NdFeB Deep Pot Magnet



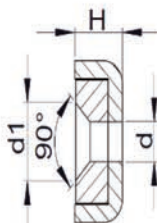
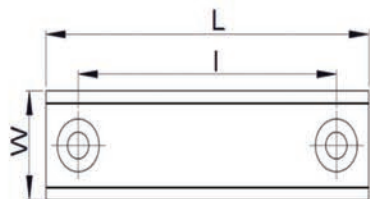
Model	D(mm)	H(mm)	M	Weight(g)	Pull Force(KG)
KM-LNP10	10	8	M3	5	2
KM-LNP12	12	8	M3	7	4
KM-LNP16	16	8	M4	12	8
KM-LNP20	20	10	M4	24	12
KM-LNP25	25	10	M5	37	25
KM-LNP32	32	10	M6	61	34
KM-LNP36	36	10	M6	77	50
KM-LNP42	42	15	M6	158	72
KM-LNP48	48	15	M8	206	81
KM-LNP55	55	15	M8	271	95
KM-LNP60	60	15	M8	322	160
KM-LNP70	70	20	M10	585	200
KM-LNP75	75	20	M10	672	270
KM-LNP80	80	20	M10	764	300
KM-LNP90	90	20	M10	967	360
KM-LNP120	120	20	M12	1720	480

NdFeB Pot Magnet

7.Block NdFeB Pot Magnet



Model	L (mm)	I (mm)	W (mm)	H (mm)	d (mm)	d1 (mm)	Weight (g)	Vertical Breakaway (KG)
KM-SNI10	10	5	13.5	5	3.3	6.5	4.5	5
KM-SNI15	15	7.5	13.5	5	3.3	6.5	6.8	7
KM-SNI20	20	10	13.5	5	3.3	6.5	9.2	10
KM-SNI30	30	15	13.5	5	3.3	6.5	14	15



Model	L (mm)	I (mm)	W (mm)	H (mm)	d (mm)	d1 (mm)	Weight (g)	Vertical Breakaway (KG)
KM-SNI40	40	30	13.5	5	3.3	6.5	19	17
KM-SNI50	50	40	13.5	5	3.3	6.5	24	27
KM-SNI60	60	50	13.5	5	3.3	6.5	30	30
KM-SNI80	80	70	13.5	5	3.3	6.5	38	33
KM-SNI100	100	90	13.5	5	3.3	6.5	48	36
KM-SNI120	120	110	13.5	5	3.3	6.5	58	40

Reading for pleasure, working for happiness!